



J.E. ADAMS INDUSTRIES
OWNERS MANUAL
MODEL 9420-1G-DIG – Digital Air / Vacuum

- PAGE 2 SPECIFICATIONS
- PAGE 2 IMPORTANT SAFETY INFORMATION
- PAGE 3-4 INSTALLATION
- PAGE 4–8 PROGRAMMING
- PAGE 8 OPERATING
- PAGE 9 MAINTENANCE
- PAGE 9-10 TROUBLESHOOTING
- PAGE 11 PARTS LIST
- PAGE 12 WIRE DIAGRAMS

SPECIFICATIONS:

Unit specifications:

Voltage: 110v, 60Hz
Amperage: (1) 20 amp service is required for this unit
Weight: 240 lbs with pallet attached

Vac specifications:

Motors: (2) 110v motors
Fuses: (2) 10 amp inline fuses

Compressor specifications:

Motor: (1) 3/4HP Twin Cylinder, 110V, 60HZ

NOTE: "UNIT INTENDED FOR COMMERCIAL USE ONLY"

IMPORTANT SAFETY INSTRUCTIONS

When using an electrical appliance, basic precautions should always be followed, including the following:

READ ALL INSTRUCTIONS BEFORE USING (THIS APPLIANCE).

WARNING – To reduce the risk of fire, electric shock, or injury:

- Do not use vacuum on wet surfaces.
- Use only as described in manual. Use only manufactures recommended attachments.
- Do not allow to be used as a toy. Close attention is necessary when used by or near children.
- Do not put any object into openings. Do not use with any opening blocked; keep free of dust, lint, hair and anything that may reduce air flow.
- Keep hair, loose clothing, fingers, and all parts of body away from openings and moving parts.
- Do not use to pick up flammable or combustible liquids, such as gasoline, or use in areas where they may be present.
- "Do not pick up anything that is burning or smoking, such as cigarettes, matches, or hot ashes."
- "Do not use vacuum without dust bag and/or filters in place."
- Never use air compressor on tires containing sealers such as "FIX-A-FLAT" type products!

SAVE THESE INSTRUCTIONS

Installation Instructions:

- Determine location to mount unit ("**DANGER**" "**THIS EQUIPMENT INCORPORATES PARTS SUCH AS SWITCHES, MOTORS, OR THE LIKE THAT TEND TO PRODUCE ARCS OR SPARKS THAT CAN CAUSE AN EXPLOSION. WHEN LOCATED IN GASOLINE-DISPENSING AND SERVICE STATIONS INSTALL AND USE AT LEAST 20 FEET (6 M) HORIZONTALLY FROM THE EXTERIOR ENCLOSURE OF ANY DISPENSING PUMP AND AT LEAST 18 INCHES (450 MM) ABOVE A DRIVEWAY OR GROUND LEVEL.**")
- Run 20 amp service to specified location. **Grounding Instructions:** This appliance must be connected to a grounded metal, permanent wiring system; or an equipment-grounding conductor must be run with the circuit conductors and connected to the equipment-grounding terminal or lead on the appliance.
- Unit must be mounted level for proper operation.
- Mount unit to location and use fig. 1 for mount pattern
- If unit is vault ready configuration see fig. 1 for mounting and fig. 2 for vault tube location.

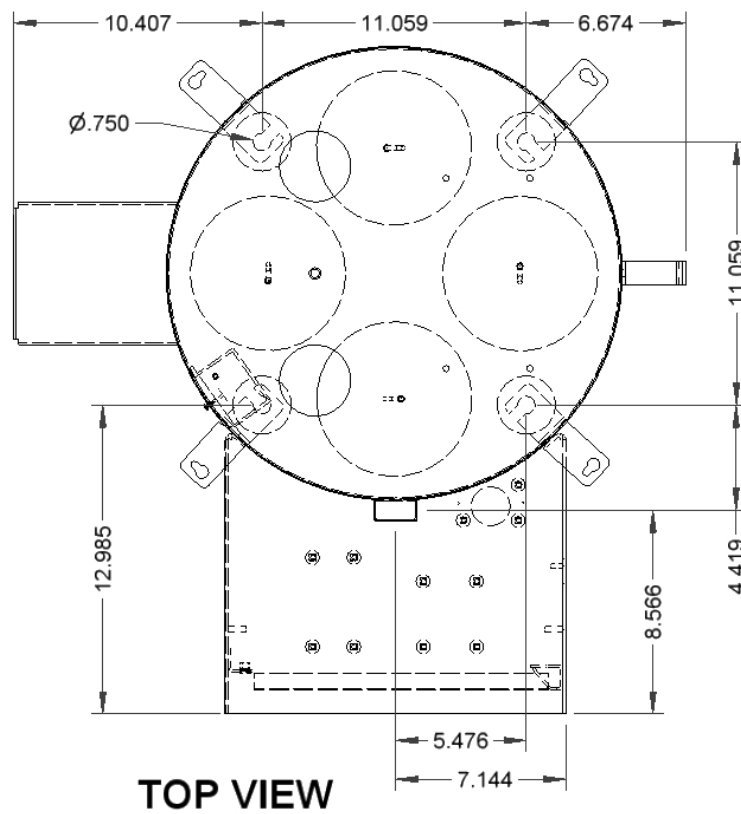
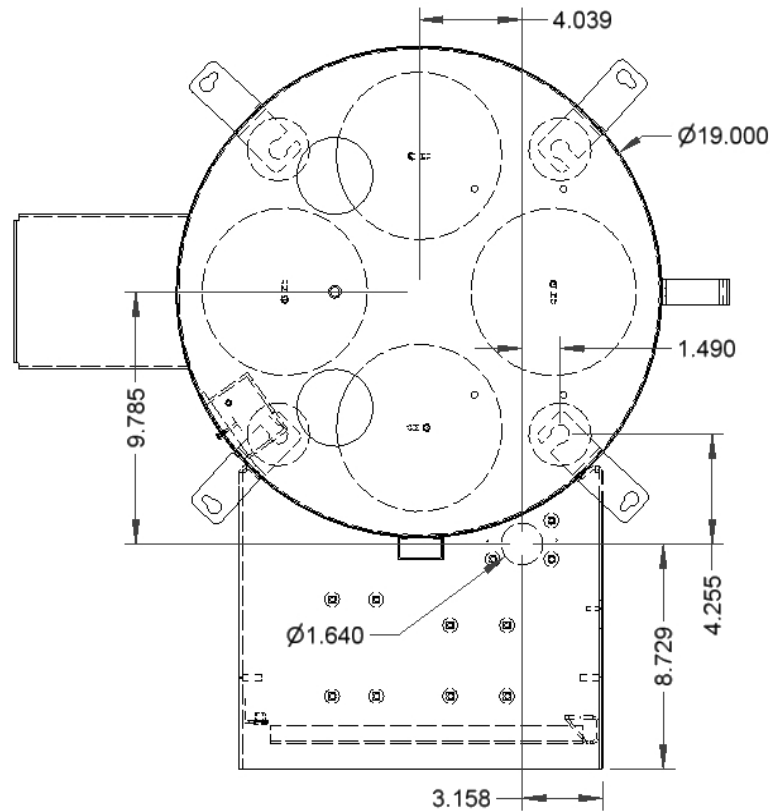


FIG 1



**FIG 2
VAULT
TUBE**

- Once unit has been installed use 5871B8 cap plugs supplied with unit to seal holes in canister bottom located in lower cleanout door. Then connect to power.
- Turn unit on and move to programming instructions.

Programming Instructions:

Coin acceptor:

- Comes standard with manual Imonex coin mech. no programming needed.

Bill acceptor:

- Bill acceptor comes pre programmed from J.E. Adams and should not require any changes. If additional programming is needed to acceptors please refer to additional literature sent along with this unit.

Changing Settings: Quick Programming Method

Digital control panel/timer unit:

- Unit may be programmed when received depending on information given at that the time of order.
- To program, follow the instructions below:
 1. Turn unit off.
 2. Hold coin switch lever in the down position.
 3. Turn unit on.
 4. Units display "t4" after s short boot up sequence.
 5. Release coin mechanism switch lever.
 6. As soon as coin mech switch lever is released, "No PU" will appear (number of pulses) for a short time and then will automatically scroll to the input quantity. The unit now displays a two digit number. This is the minimum number of coins to make the unit engage for the programmed time. "00" unit is free air, 01 for 1 coin, 02 for two coins, etc. Adjust by using + or – buttons on the control panel. **Note: vacuum and air compressor are not able to be priced or timed at separate values. The programmed price gives you the programmed time regardless of function chosen.**
 7. Press i button to continue: Unit now advances to "Dur" (duration or amount of time per coin) on the display and will automatically scroll to the amount of time in seconds per coin. Adjust this amount by using + or – buttons. Example: For 4 minutes of vend time for \$ 0.75 – using the plus or minus button set the duration to 80. This means 80 second per coin (Quarter) for a total of 240 seconds or 4 minutes running time. **(note: this parameter will not show up if the unit is set to free vend, "00", in the previous step).**
 8. Press i button to continue and unit will display "COnn" (compressor) for a short time and then automatically scroll to the compressor operation mode. Choose which mode you would like by using the +/- buttons; "no" = none or no compressor, "denn" = on demand, and "cont" = continuous. "Cont" is recommended as it seems to cause the least amount of confusion to the end user.
 9. Press i button to continue and unit will now display "nnod" which is a setting for a modem (Y or N). Most applications will not have a modem so this will need to be set to "N" (no).
 10. Press i button to continue and unit now displays "End".

Turn unit off for 10 seconds and the back on. Now controller has the new parameters.

Counter:

To access the counter:

In normal operation mode, press "i" button and just after the beep press the "minus" button (you must be quick - may have to do this 2-3 times).

This unit has two counters:

The first one is a non-resettable 8 digit number shown in two steps: CnH 0000 and the CnL 0000.

When pay air mode the counter shows the number of coins put through the machine (not the number of vends).

When free air mode the counter shows the number of vends.

Changing settings – advanced programming.

Before beginning, most domestic applications will require “PSI” rather than "BARS" at the gauge and on the display. These settings are factory set at JE Adams. Only access these settings if absolutely necessary and write down settings before you change them.

1. Turn power switch to off.
Hold coin switch lever in the down position.
2. Turn power switch to on, and wait for first audible “beep.”
Just after first “beep” press (“+”) button followed by the (“-”) button. “Prtr” is shown on the display.
(if Prtr is not displayed, turn unit off and try again)
3. Release the coin switch lever and
press “i” button once, “T-4” blinks on display and
will then disappear.
4. “1 Un” is now shown on the display for a brief moment
and will automatically scroll to the setting.
At this step, set the pressure unit for the gauge.
"PSI" or "BAR" are the options. Choose PSI for most
applications by using the + or - buttons on the control panel.
Press “i” button to continue
5. “2 Un” is now shown on the display for a brief moment
and will automatically scroll to the setting. "PSI" should
be shown, if not change to PSI.
Press “i” button to continue



6. "dE" is now shown on the display for a brief moment.
At this step, set the default tire pressure, value which is factory set at 32 PSI. Use + or - buttons to set.

Press "i" button to continue.



7. "LS" is now shown on the display. This is typically set to 70 PSI which is the maximum pressure value.

Press "i" button to continue.



8. "n° PU" is shown on the display for a short moment and then a two digit value is displayed. This represents the number of coins to activate machine.



9. 00 is for free vend, 01 for one coin, 02 for two coins, and so on. Choose by using + or - buttons.

Press "i" button to continue



Note: vacuum and air compressor are not able to be priced or timed at separate values. The programmed price gives you the programmed time regardless of function chosen.

10. "Dur" is now shown on the display which represents the amount of time per coin in seconds. **If machine is set to "00" free vend, this option will not be present.** Set time per coin by using "-" or "+" buttons.

Press "i" button to continue

11. "Conn" is now shown for a brief moment and then the setting. Leave this at "cont". See quick programming section of manual for full explanation.

Press "i" button to continue



12. "nnod" is shown on the display which is for the modem setting.

Most machines will not have a modem so choose "no."

Press "i" button to continue

13. "End" is shown on the display

This indicates the setup is finished.

Turn tire gauge off, wait 10 seconds minimum before turning on.



Next time the tire gauge is on, it will work with the new settings

Operating Instructions:

- Flip toggle switch to desired function, then insert coins or bills to start machine.*
- If other function is selected other than original selected item, unit will switch to that function.
- Once service is used, hang up hoses.

***NOTE: vacuum and air compressor are not able to be priced or timed at separate values. The programmed price gives you the programmed time regardless of function chosen.**

Maintenance:

- Filter bags should be taken out weekly and shaken out. Also it might be a good idea to keep a new set of bags on hand so that once a month or longer you can take original bags out and wash them.
- Check vac hose and air hose for cracks on a weekly basis.
- Clean canister with a stainless steel cleaner as needed.
- Every month, remove filter from compressor and clean.
- Check vac motor brushes approx. every 3 months for excessive wear. Motor brushes should be changed if they are shorter than 3/8".

Disconnect power before doing this!!

- No lubrication required on vacuum motors or air compressor.
- All servicing of machine should be conducted by an authorized service representative.

Troubleshooting:

DISCONNECT POWER BEFORE SERVICING!!

Problem	Possible cause	Solution
Unit is not powered.	Fuse panel breaker may not be on.	Turn on breaker.
	Switch inside unit is not in the on position.	Turn switch on.
Unit keeps blowing my breaker from my incoming power source	Inadequate wire size ran to machine	Call electrician and install proper wire size for required service versus length or run.
	Wrong size breaker, or non dedicated line.	Install correct breaker or eliminate other components from line.
Fuses for vac motors keep blowing.	Inadequate wire size ran to machine	Call electrician and install proper wire size for required service versus length or run.
	Motor brushes may be bad or too short (under 3/8").	Replace motor brushes

Vacuum seems to have lost suction	Vac hose clogged	Cleanout debris from vac hose
	Filter bags need cleaned	Clean filter bags or replace
	Vac hose is split/cracked.	Replace vac hose
	Cleanout door gaskets torn or worn	Replace gaskets
	Plug(s) in bottom of can may have came out.	Replace with NEW plugs - used plugs do not work well.
	One motor may not be working.	Confirm all motors are working, replace if necessary.
Inadequate or no pressure.	System leaking	Check air hose system for leaks visually or by turning machine off and applying air chuck to tire or air tank with at least 35lbs of pressure. Listen for leaks.
	Compressor not running?	Check fuse/ power.
	Chuck washer is worn out	Replace rubber washer inside chuck with special JE Adams PN 8533-13CW

